

Total number of printed pages : 7

NB-XII/MS/1

2023
MUSIC

Total marks : 70

Time : 3 hours

General instructions:

i) *Approximately 15 minutes is allotted to read the question paper and revise the answers.*

ii) *The question paper consists of 34 questions.*

iii) *Marks are indicated against each question.*

iv) *Internal choice is given in questions carrying 4 and 6 marks.*

N.B: *Check to ensure that all pages of the question paper is complete as indicated on the top left side.*

1. Write the middle C on tenor clef and alto clef. 1
2. Draw a demisemiquaver note and rest. 1
3. How is $\frac{6}{4}$ different from $\frac{3}{2}$ time signature ? 1
4. Why is it good to use pentatonic scales to improvise music ? 1
5. Write the key signature for B \flat minor and G \sharp minor on the bass clef. 1
6. Write the enharmonic equivalents of G double flat and A double sharp. 1
7. Give an example each for upper and lower auxiliary note on C . 1
8. Does the imperfect cadence end on a tonic or the dominant chord ? 1
9. What will diminished 5th and major 7th be inverted to ? 1
10. Define modulation . 1
11. What is the difference between senza pedal and una corda ? 1
12. Give the other two names of plain-song . 1

19. Add accented passing notes below the asterisks . 2

D * E * D G * E * C D

20. Draw a perfect cadence using crotchets in the key of A major . 2

21. Name two composers from the baroque period . 2

22. Label the following : 2

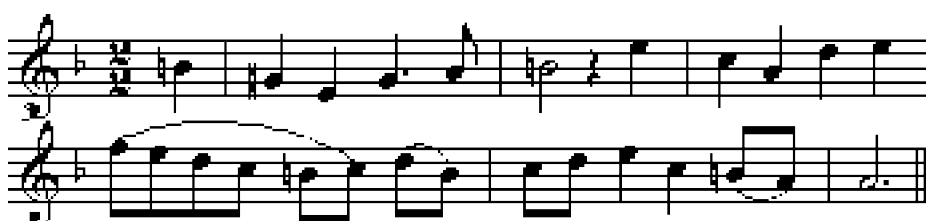
a)

25. Construct these scales using minim notes. 4
 a) C harmonic minor scale on the treble clef, ascending and descending. Use key signature.
 b) A major scale on the bass clef, down and up. Use accidentals only.

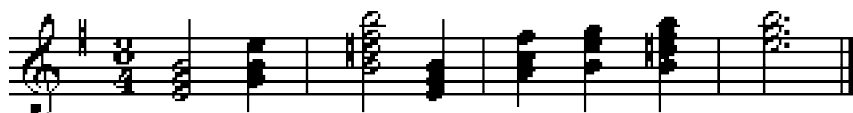
26. Transpose the given melodies : 4
 a) Up a minor 3rd



- b) Down a perfect 5th



27. Label the chords with roman numerals below the staff and chord symbols above to show the chord progression. 4



28. Write a 4 bar melody using the C pentatonic major scale. Write them in 2-bar phrases with the first phrase ending on G and the second phrase on C, on the treble clef. Use $\frac{5}{8}$ time signature. 4

29. Using minims, write 4-part chords using the chords shown by the roman numerals. Double the root in each case even if the chord is in first or second inversion. Use key signature. 4
 a) B minor ii dim b
 b) D^b major Vc

Answer any **three** from questions 30-34.

30. Complete the following as directed : 6

a) Write the bass line (add repeated notes/octaves)

I ii V^b I IV^b V⁷ I

b) Write the melody line (add some passing notes)

F^m B^bm/D^b F^m B^bm C⁷ F^m

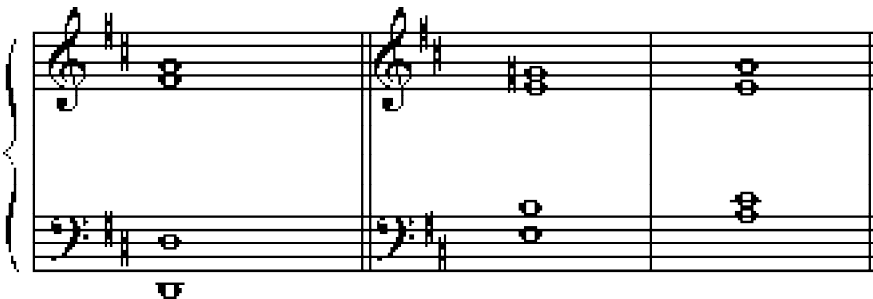
31. On the following scales, write the tonic, super-tonic, sub-dominant and dominant 7th triads. Label them with roman numerals below and chord symbols above. Use key signatures and necessary accidentals. 6

- a) B^b melodic minor, ascending, bass clef.
- b) G[#] harmonic minor, descending, alto clef.

32. Work out the following modulations :

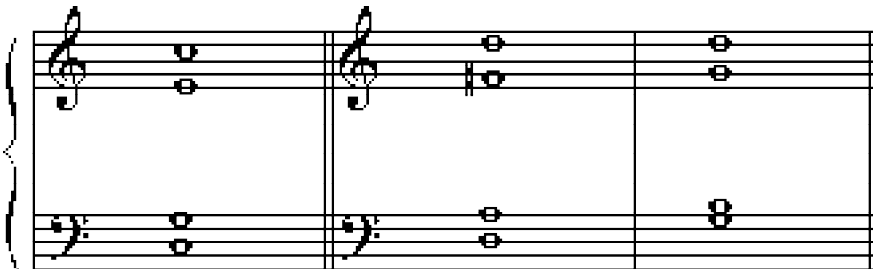
6

a)



Tonic chord in _____ Perfect cadence in _____
The perfect cadence is in the _____

b)



Tonic chord in _____ Perfect cadence in _____
The perfect cadence is in the _____

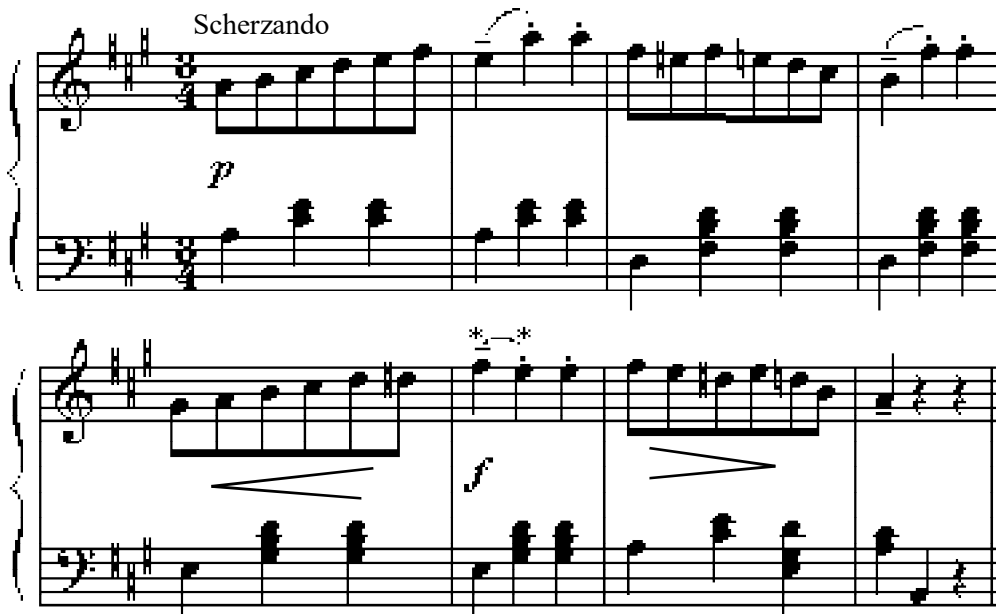
33. Discuss the music of the 20th century .

6

34. Look at the music and answer the following questions .

6

Scherzando



- a) In which key is this piece ?
- b) Name two unaccented passing notes in bar 5 .
- c) Name the interval between the two notes marked with asterisks in bar 6.
- d) Describe the dynamic markings in this piece.
- e) Write an appropriate roman numeral below the last crotchet beat of bar 7.
- f) Give the meaning of scherzando.
